

Sheppersons Avenue Gosberton Risegate Spalding PE11 4EX

£875 Per Calendar Month

- Available Now
- Popular village setting
- Low maintenance rear garden
- Large conservatory to rear
- Off road parking to front for multiple cars
- Modern kitchen breakfast room

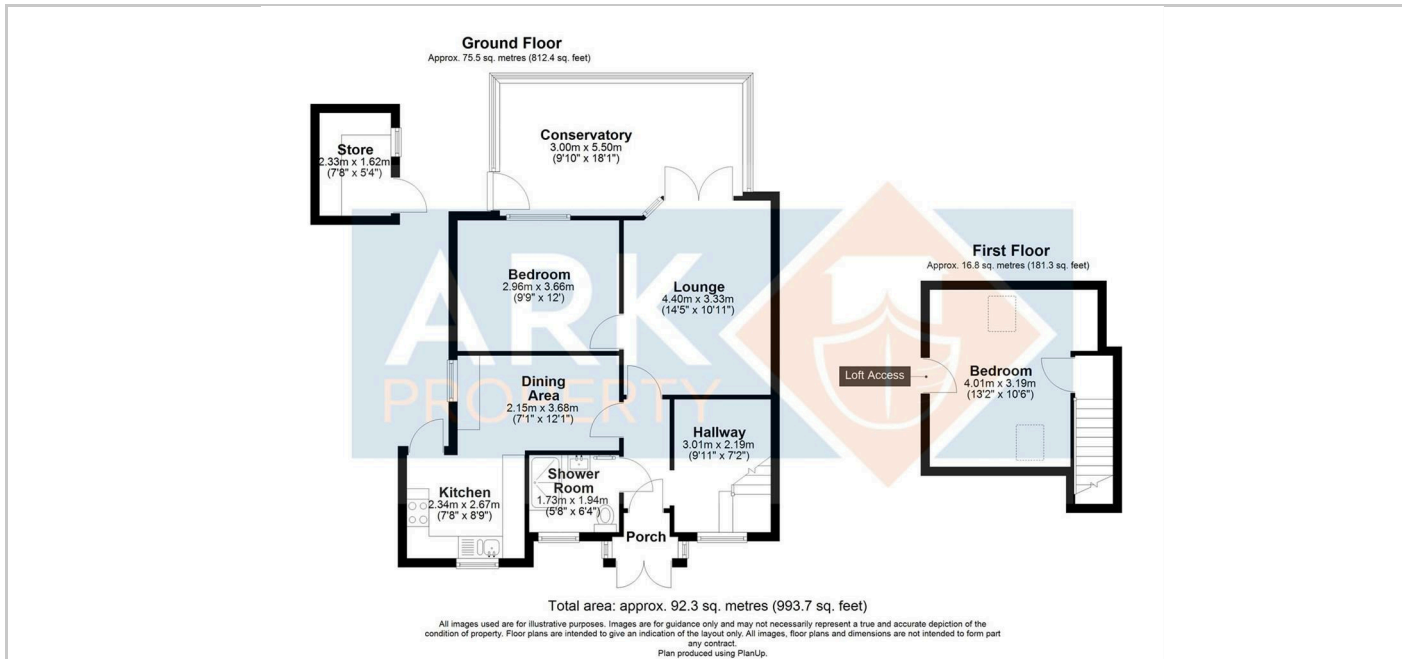
THE PROPERTY

Two-bedroom chalet bungalow available to rent in Gosberton Risegate.

The property offers two good-sized bedrooms, off-road parking, a kitchen/diner, lounge, conservatory, and a shower room. The property benefits from having off road parking and outside storage.

Located in a village setting, the property provides practical living space and is available now.

£1009.61 deposit, Council Tax Band A.



SITUATION

Directions

6 New Road, Spalding, Lincolnshire, PE11 1DQ
Tel: 01775 766888 Email: info@arkpropertycentre.co.uk <https://www.arkpropertycentre.co.uk>

